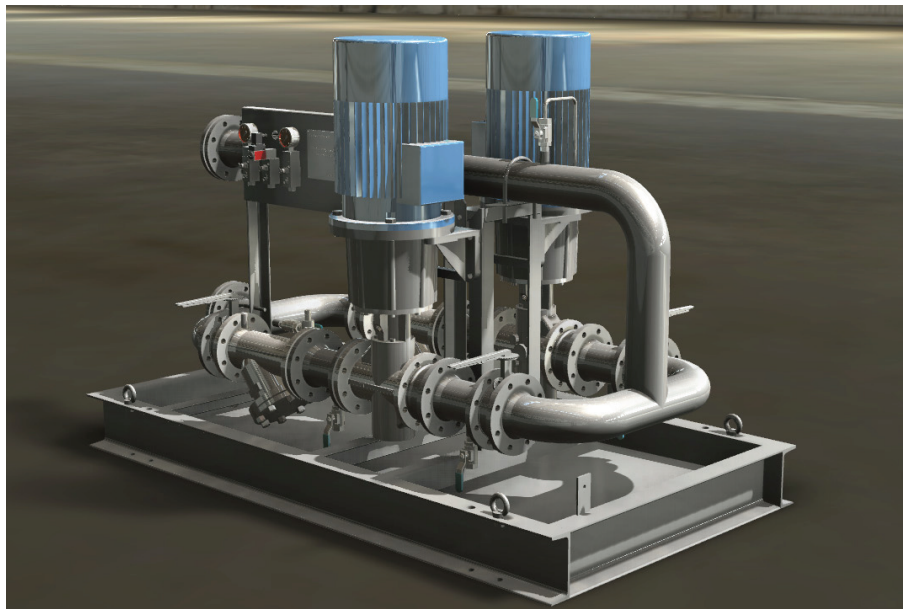


HFO Feeder Module



This unit is mounted with two pumps (one working and one standby), protected with strainers. Fitted with valves and check valves on the outlet. On common panel there's mounted pressure gauge (inlet+outlet) and pressure switch (outlet).

Pipes are insulated with 30 mm mineral wool, covered with sea worthy aluminium cladding EN5754. The module is delivered with counter flanges and foundation bolts.

Standard configuration:	
Media	Heavy Fuel Oil
Viscosity	65 cSt. 90° C / 110 cSt a 80°C
Power Suply	3x480V / 60Hz
Flow (max)	0,9 m/s
Operation pressure	8 bar
Surface treatment	Acc. to C3
Colour- standard	RAL 7035

Option:

- Power: 400V/50Hz
- Pump seal: Magnetic seal
- Power and pump seal: 400V/50Hz and Magnetic seal
- Insulation: Soft insulation of valve, strainer and pump
- Tracing: Electrical tracing with temp. reuglation
- Surface treatment: According to, EN12944: 1998 level C4 M
- Sea worthy packing: Wooden box ISPM 15

Document no.:	Text	Capacity m³/h	Inlet/ Outlet	NPSHr mWC	Power - kW consumption
00294-01-0011	HFO 1	6	DN50	2,77 / 2,92	2,22 / 2,32
00294-01-0012	HFO 2	11	DN65	4,07 / 4,24	2,39 / 2,55
00294-01-0013	HFO 3	16	DN80	4,07 / 4,24	5,0 / 5,25
00294-01-0014	HFO 4	25	DN100	3,44 / 3,65	7,73 / 8,08
00294-01-0015	HFO 5	31	DN100	4,0 / 4,27	9,41 / 9,83
00294-01-0016	HFO 6	38	DN125	3,77 / 4,00	11,6 / 12,0
00294-01-0017	HFO 7	55	DN150	4,27 / 4,56	16,3 / 16,9
00294-01-0018	HFO 8	68	DN150	5,21 / 5,6	20,3 / 21,0