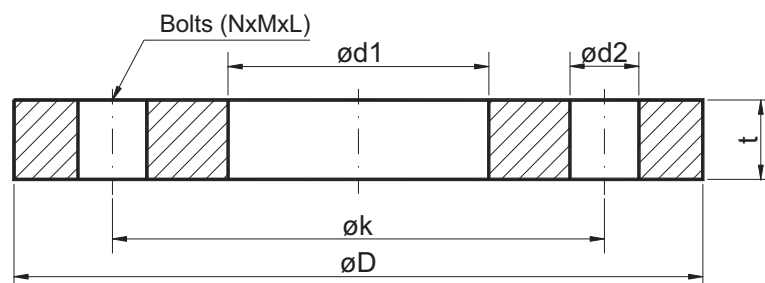


Flanges

DN250 - DN2400

Stock no. 95044

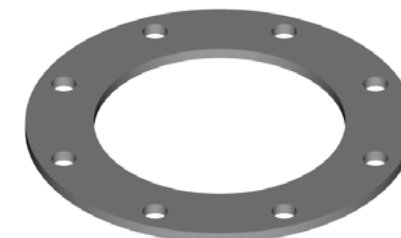


Stock No.	Pipe		Flange			Bore and bolts			Weight [kg]
	ND	Dia. [mm]	øD [mm]	ød1 [mm]	t [mm]	ød2 [mm]	øk [mm]	NxMxL	
95044-01-0250	250	273	375	276	16	18	335	12-M16x50	6.0
95044-01-0300	300	323.9	440	327	16	22	395	12-M20x60	8.0
95044-01-0350	350	355.6	490	359	16	22	445	12-M20x60	10.4
95044-01-0400	400	406.4	540	410	16	22	495	16-M20x60	11.4
95044-01-0450	450	457	595	461	16	22	550	16-M20x60	13.2
95044-01-0500	500	508	645	512	16	22	600	20-M20x60	14.2
95044-01-0550	550	559	703	563	20	22	650	20-M20x70	20.7
95044-01-0600	600	610	754	614	20	22	700	20-M20x70	22.4
95044-01-0650	650	660	805	665	20	22	750	20-M20x70	24.0
95044-01-0700	700	711	856	716	20	22	800	24-M20x70	25.7
95044-01-0750	750	762	907	767	20	22	860	24-M20x70	27.5
95044-01-0800	800	813	958	818	20	22	900	24-M20x70	29.2
95044-01-0850	850	864	1010	870	20	22	950	28-M20x70	30.5
95044-01-0900	900	914	1060	920	20	22	1010	28-M20x70	32.5
95044-01-0950	950	964	1110	970	20	22	1060	28-M20x70	34.8

Description:
Dimensions according to DIN 86044.

Material: S235JRG2

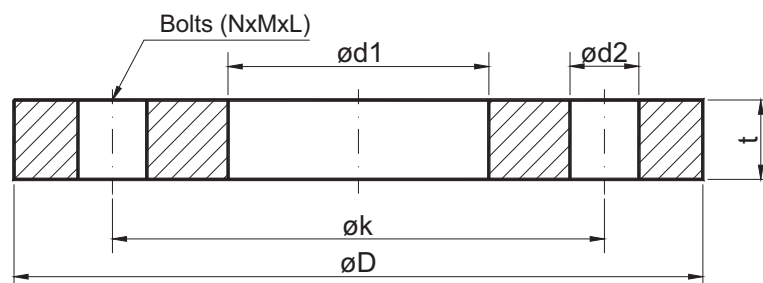
- Tolerance of ød1 :
 $>200 \leq 400$ mm: +1
 > 400 mm: +1.5



Flanges

DN250 - DN2400

Stock no. 95044



Stock No.	Pipe		Flange			Bore and bolts			Weight [kg]
	ND	Dia. [mm]	øD [mm]	ød1 [mm]	t [mm]	ød2 [mm]	øk [mm]	NxMxL	
95044-01-1000	1000	1016	1162	1022	20	22	1110	32-M20x70	35.8
95044-01-1050	1050	1070	1216	1076	20	22	1160	32-M20x70	37.6
95044-01-1100	1100	1120	1266	1126	20	22	1210	32-M20x70	39.4
95044-01-1200	1200	1220	1366	1226	20	22	1310	36-M20x70	42.6
95044-01-1300	1300	1320	1466	1326	20	22	1410	40-M20x70	45.8
95044-01-1400	1400	1420	1566	1426	20	22	1510	40-M20x70	49.3
95044-01-1500	1500	1520	1666	1526	20	22	1610	44-M20x70	52.5
95044-01-1600	1600	1620	1766	1626	20	22	1710	48-M20x70	55.7
95044-01-1700	1700	1720	1866	1726	20	22	1810	48-M20x70	59.1
95044-01-1800	1800	1820	1966	1826	20	22	1910	52-M20x70	62.3
95044-01-1900	1900	1920	2066	1926	20	22	2010	56-M20x70	65.6
95044-01-2000	2000	2020	2166	2026	20	22	2110	56-M20x70	69.0
95044-01-2100	2100	2120	2266	2126	20	22	2210	60-M20x70	72.2
95044-01-2200	2200	2220	2366	2226	20	22	2310	64-M20x70	75.4
95044-01-2300	2300	2320	2466	2326	20	22	2410	64-M20x70	78.9
95044-01-2400	2400	2420	2566	2426	20	22	2510	68-M20x70	82.1

Description:

Dimensions according to DIN 86044.

Material: S235JRG2

- Tolerance of ød1 :
 $>200 \leq 400$ mm: +1
 > 400 mm: +1.5

