

## Pre-fabricated pipes for exhaust gas system

**Stock no. 70000**

### Description:

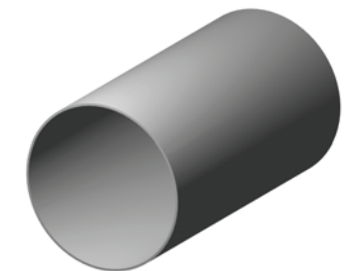
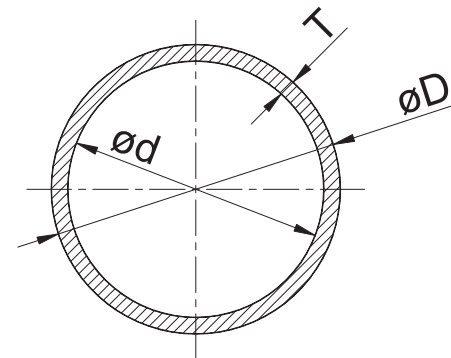
Pre-fabricated, welded pipes with tolerances according to DIN 1626. Other dimensions are available.

### Material:

S235JRG2

### Surface treatment:

- Standard is no surface treatment.
- Other surface treatment is available.



Stock no.	Nominal diameter	$\varnothing D$ [mm]	t [mm]	$\varnothing d$ [mm]	Weight/m [kg]
70000-01-0300	300	323.9	4.0	315.9	31.6
70000-01-0350	350	355.6	4.0	347.6	34.7
70000-01-0400	400	406.4	4.0	398.4	39.7
70000-01-0450	450	457.0	4.0	449.0	44.7
70000-01-0500	500	508.0	4.0	500.0	49.7
70000-01-0550	550	559.0	4.0	551.0	54.7
70000-01-0600	600	610.0	4.0	602.0	59.8
70000-01-0700	700	711.0	4.0	703.0	69.7
70000-01-0800	800	813.0	5.0	803.0	99.6
70000-01-0900	900	914.0	5.0	904.0	112.1
70000-01-1000	1000	1016.0	5.0	1006.0	124.7
70000-01-1100	1100	1120.0	5.0	1110.0	137.5
70000-01-1200	1200	1220.0	5.0	1210.0	149.8
70000-01-1300	1300	1320.0	6.0	1308.0	194.4
70000-01-1400	1400	1420.0	6.0	1408.0	209.2
70000-01-1500	1500	1520.0	6.0	1508.0	224.0
70000-01-1600	1600	1620.0	6.0	1608.0	238.8
70000-01-1700	1700	1720.0	7.0	1706.0	295.7
70000-01-1800	1800	1820.0	7.0	1806.0	313.0
70000-01-1900	1900	1920.0	7.0	1906.0	330.2
70000-01-2000	2000	2020.0	8.0	2004.0	397.0